

Centering Black Women



QUEENS VILLAGE

A stylized profile of a woman's head in dark purple, facing left. She has a large, circular earring. Behind her head is a large, abstract, fan-like shape composed of three curved segments in yellow, red, and purple.

Powering Cradle Cincinnati

A large, solid purple curved shape that starts from the bottom right and curves upwards and to the left, partially obscuring the bottom right of the page.

Overview

1. Build a CAB
2. Meet regularly
 1. Place-making
 2. Listen
 3. Build trust - Implement what community advises
3. Practice empathy
4. Celebrate!
5. Process

Community Advisory Board (CAB)

- Comprised of Black Women recruited from across the city
- Informs Community Strategy and Designs Place-Based work



Queens Village

- Supportive Gathering for Black Women
- Opportunity to Relax, Re-power and take care of each other
- Spread is place-based and designed by Neighborhood champions



Place-based work

- Educational Panels
- Healing Circles
- Mindfulness and Yoga
- Community Art Projects



Radical Empathy

Story Share- fosters empathy by breaking down barriers and shattering stereotypes.



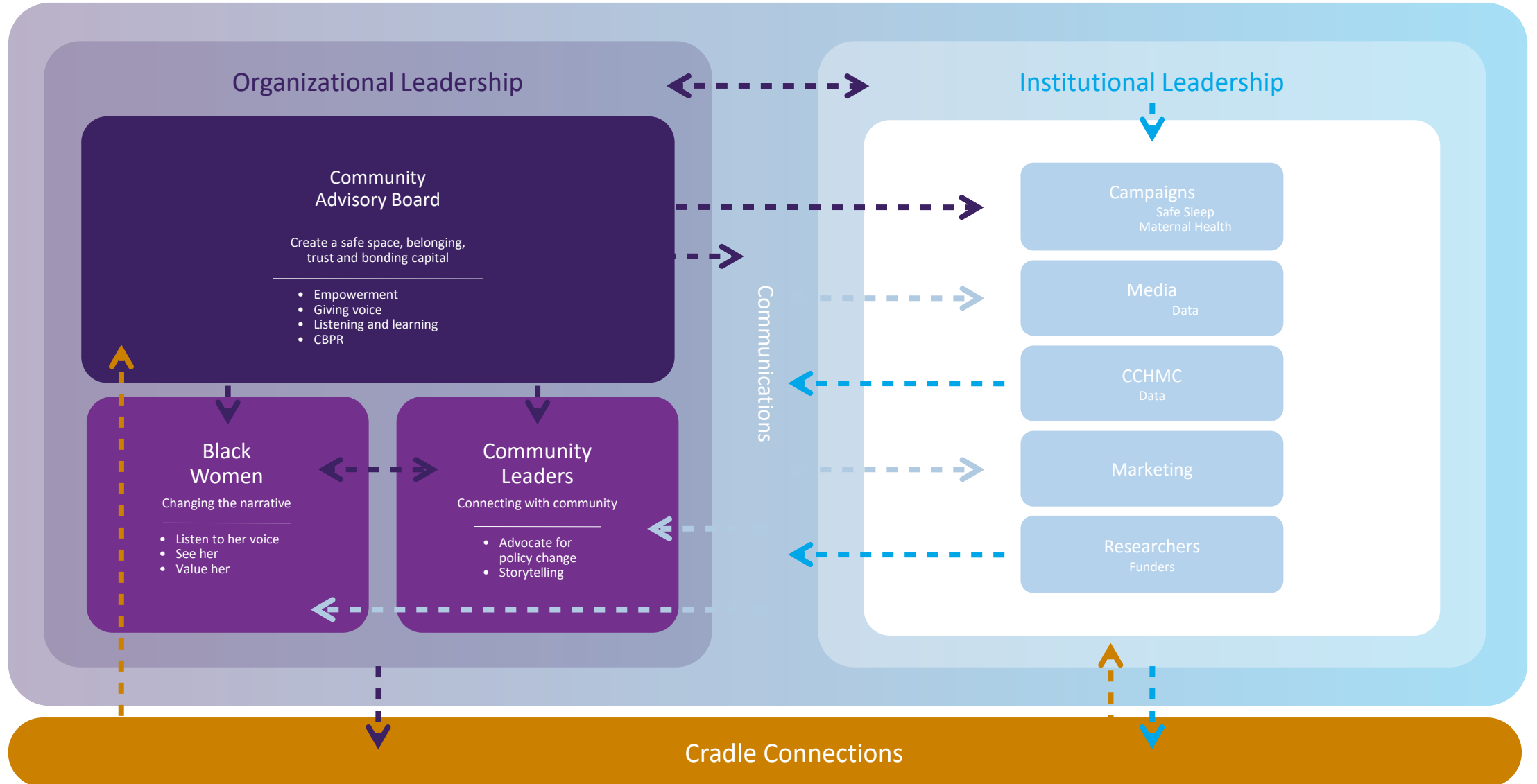
Creating Visibility for Black Women

- - #becauseweloveher Social Media Campaign
- - #wearelistening
- - In Her Voice Concert

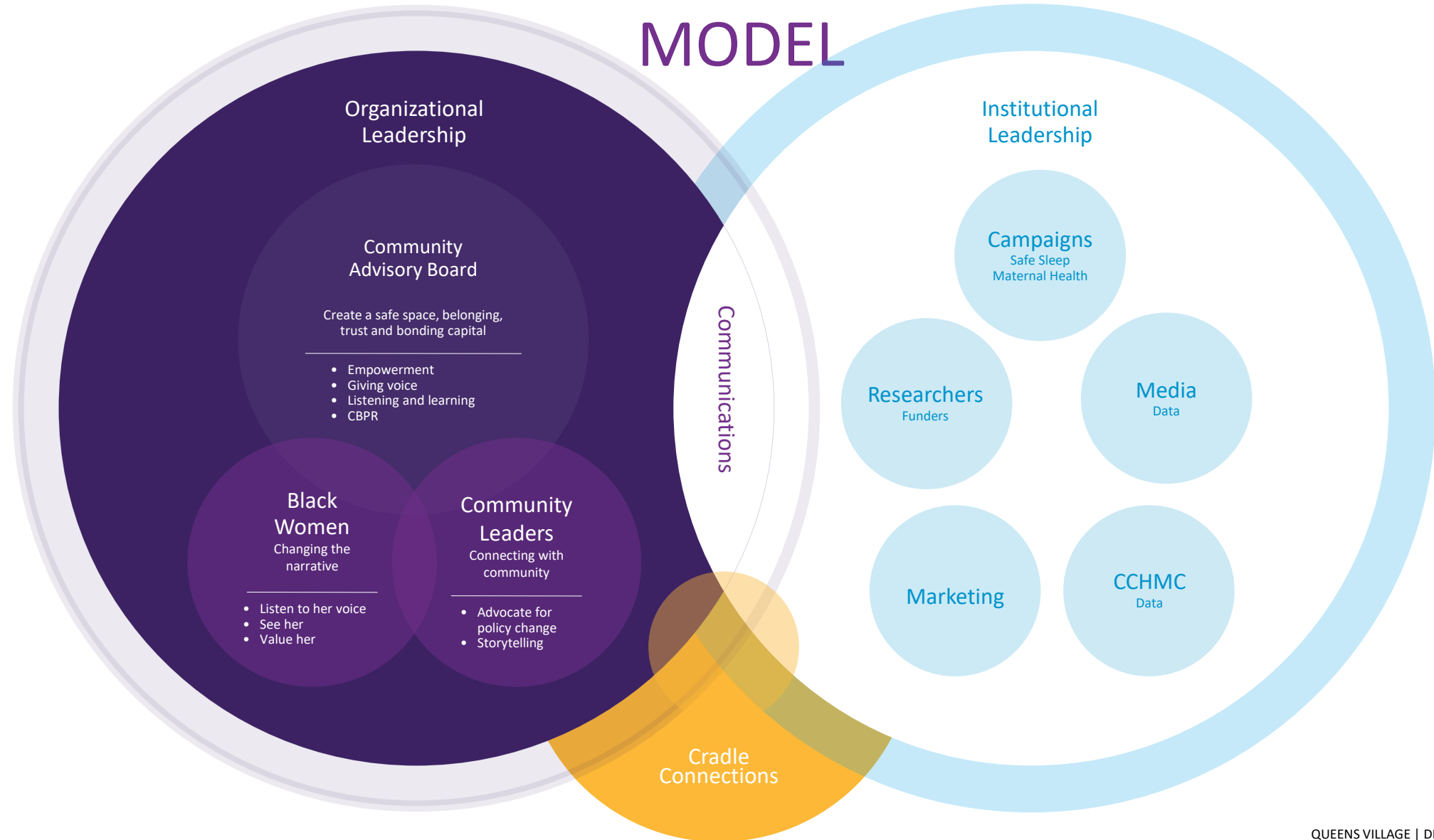


cradlecincinnati.org

- QUEENS VILLAGE MODEL



• QUEENS VILLAGE MODEL



• QUEENS VILLAGE MODEL

